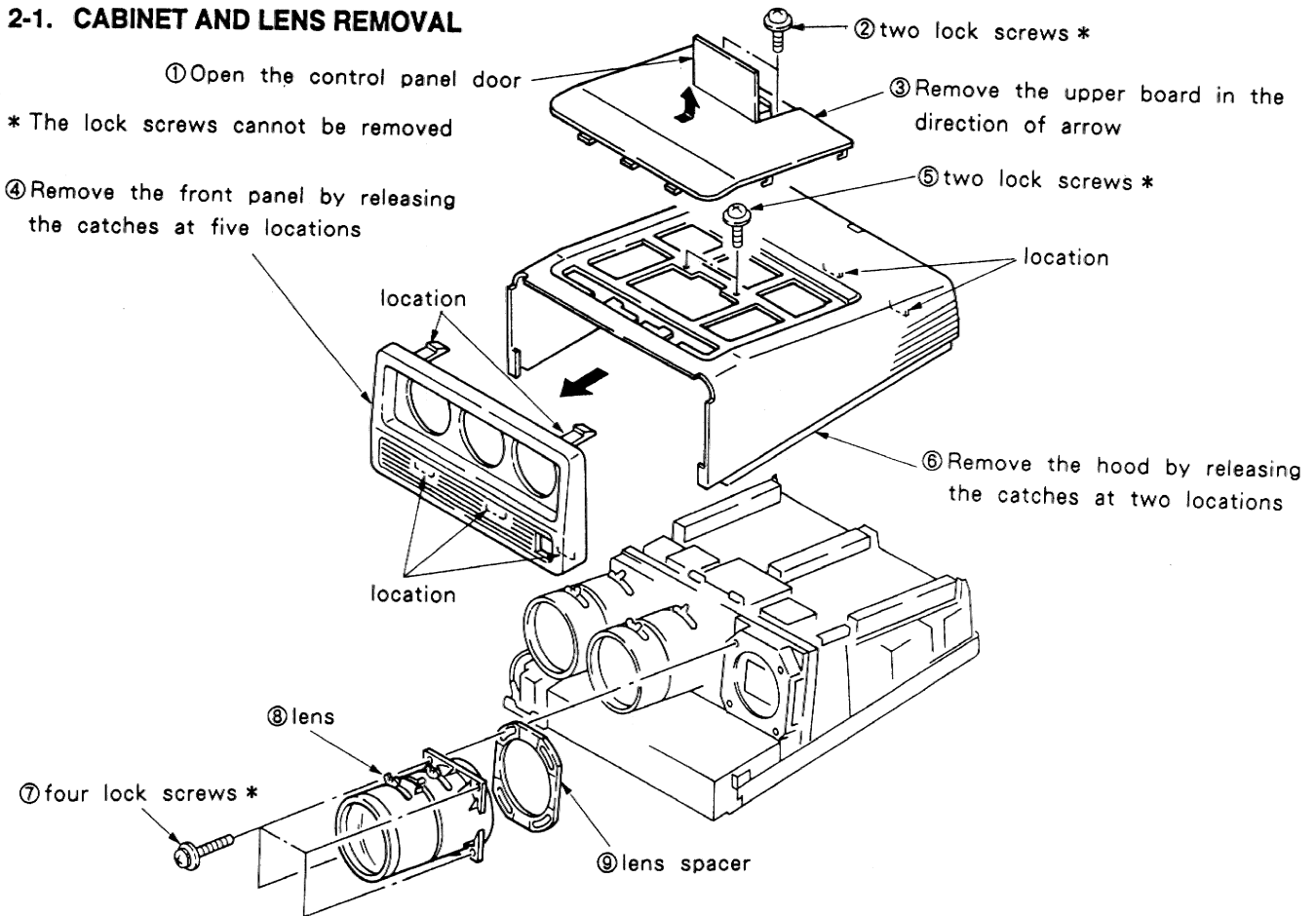


## SECTION 2

### DISASSEMBLY

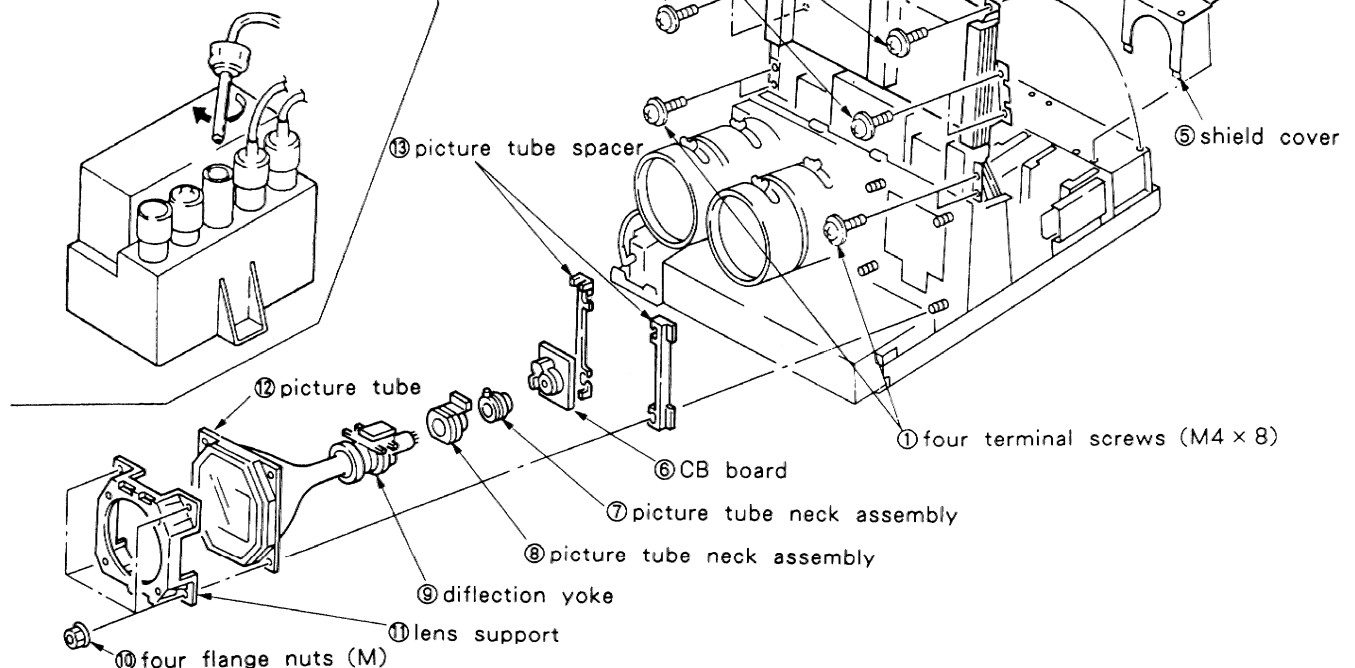
#### 2-1. CABINET AND LENS REMOVAL



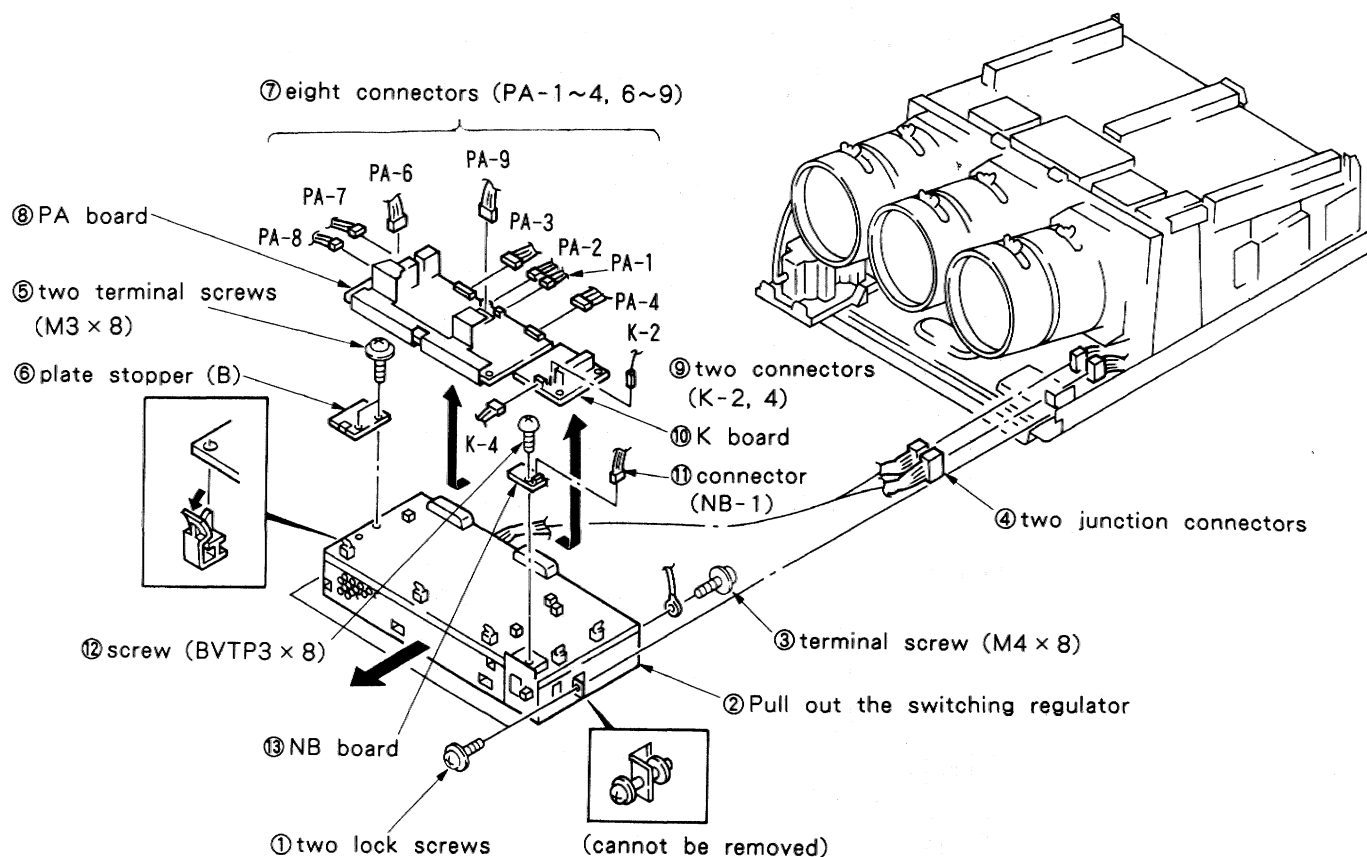
#### 2-2. PICTURE TUBE REMOVAL

##### HIGH VOLTAGE CABLE REMOVAL

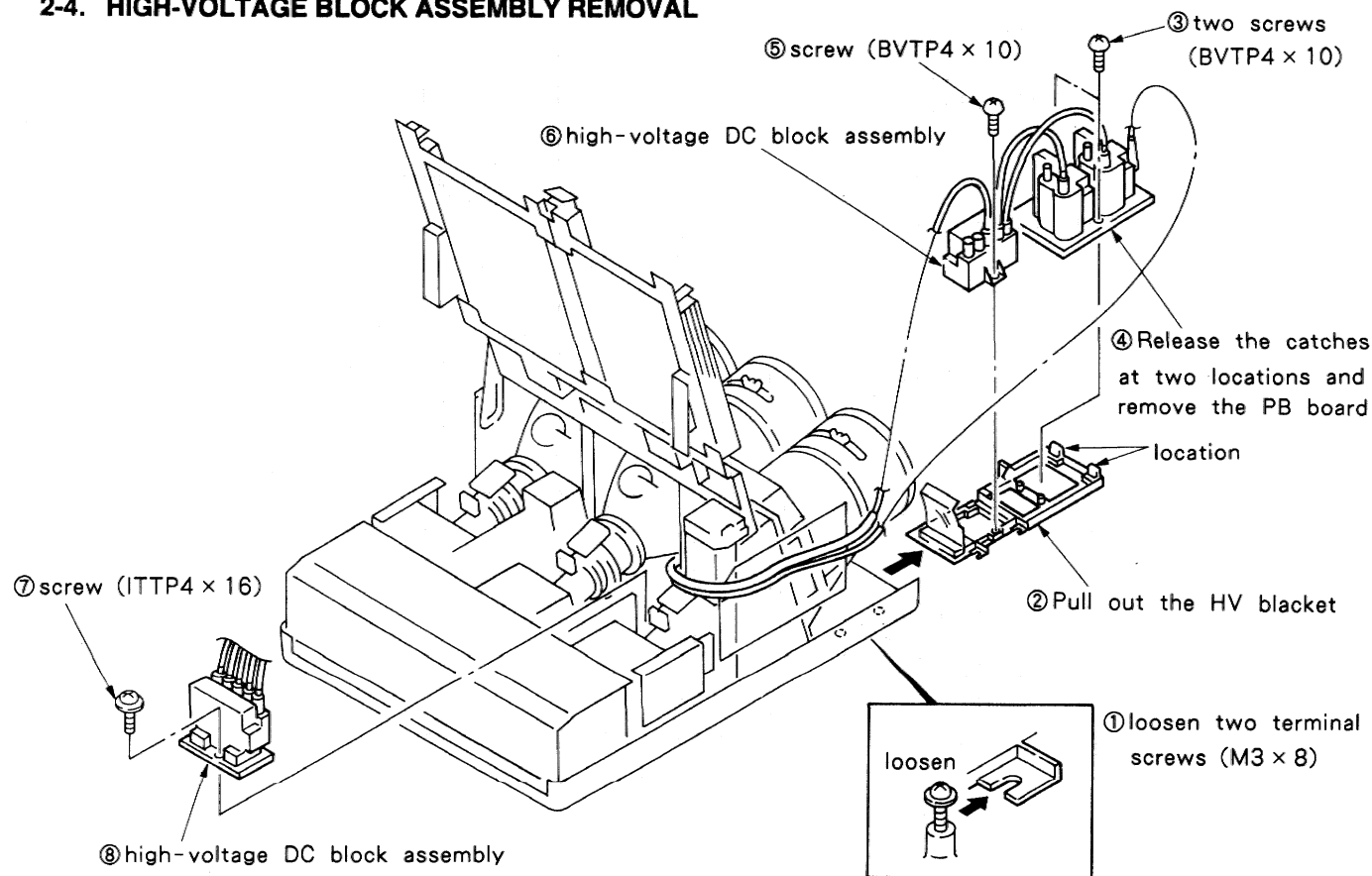
- ① Pressing cable, Turn 90°
- ② Pull out a high-tension lead wire connected to HV BLOCK.



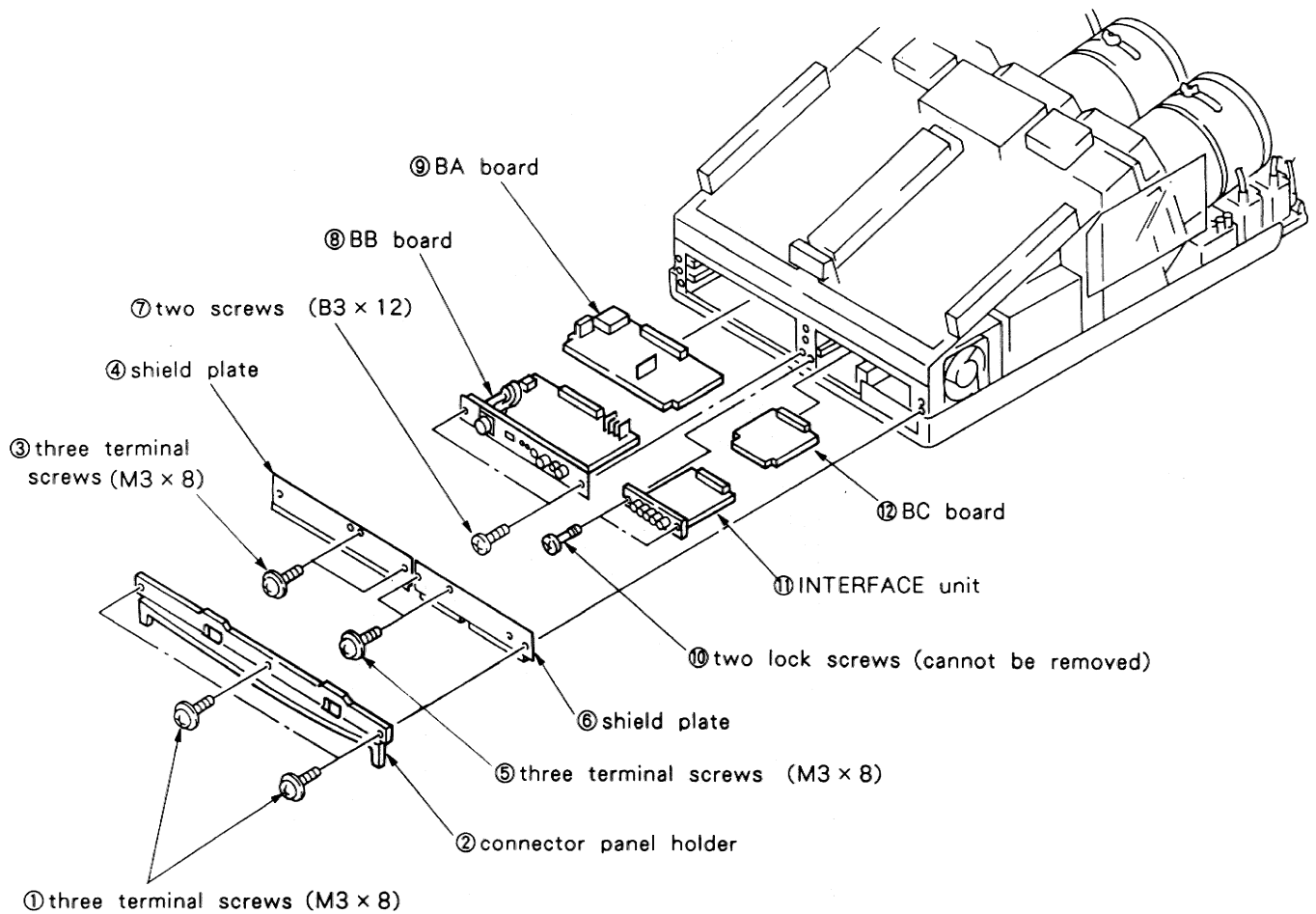
## 2-3. POWER BLOCK REMOVAL (PA, K AND NB BOARDS)



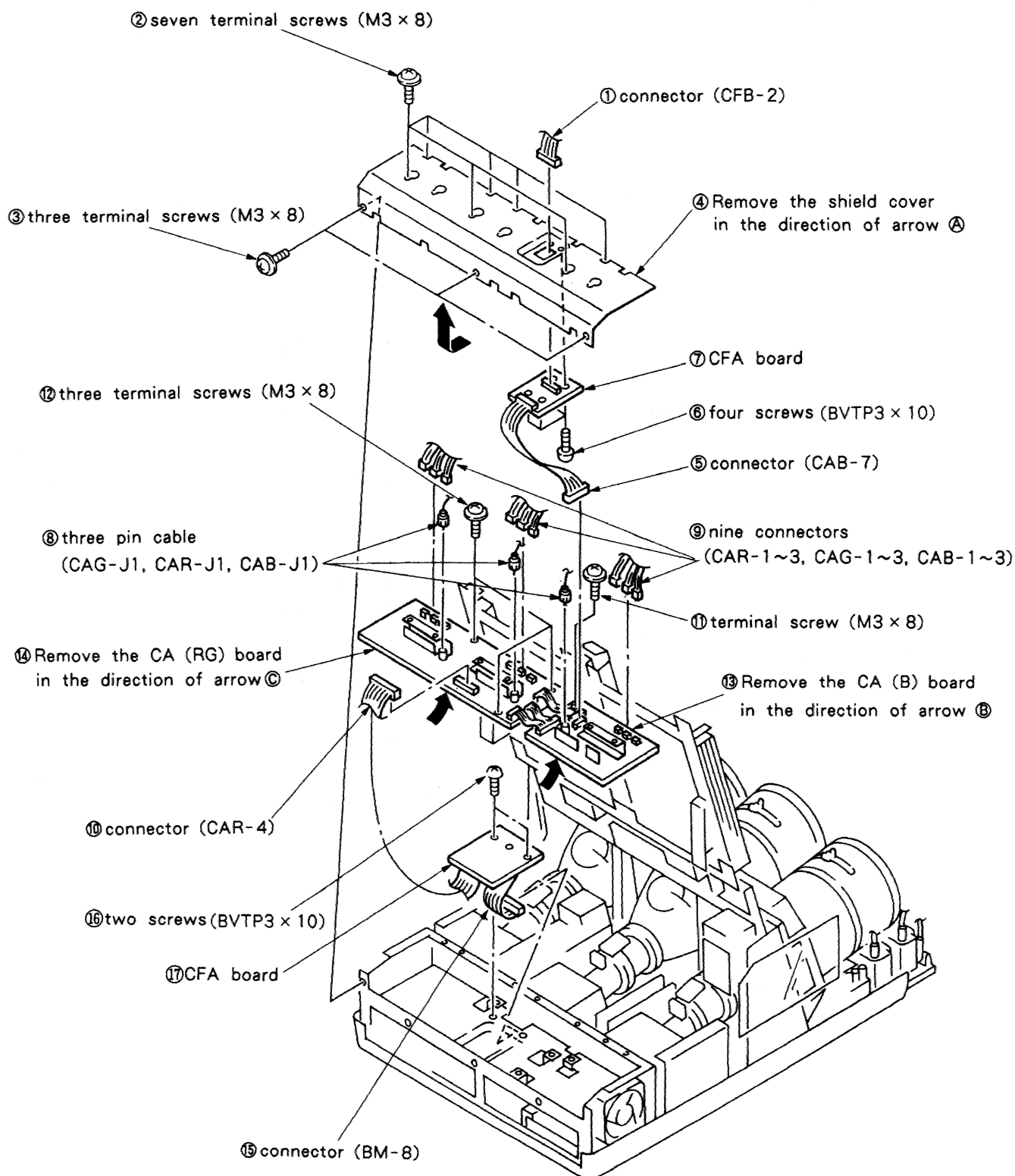
## 2-4. HIGH-VOLTAGE BLOCK ASSEMBLY REMOVAL



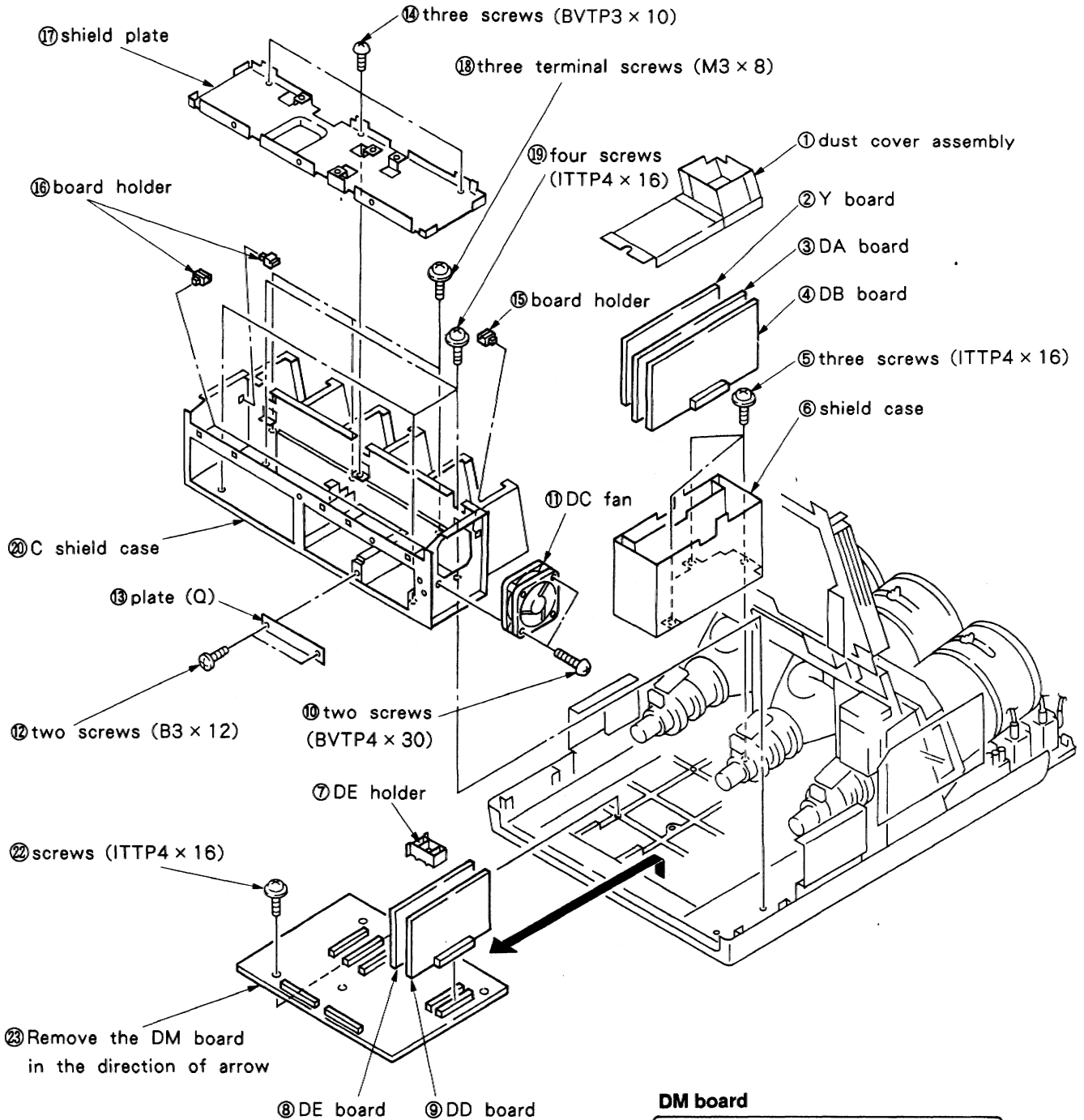
## 2-5. INTERFACE UNIT, BA, BC AND BB BOARDS REMOVAL



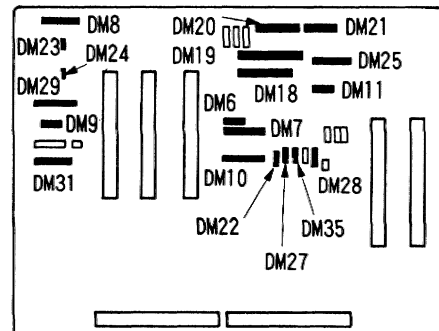
## 2-6. CFA, CFB, CA(RG) AND CA(B) BOARDS REMOVAL



## 2-7. Y, DA, DB, DM, DD AND DE BOARDS REMOVAL

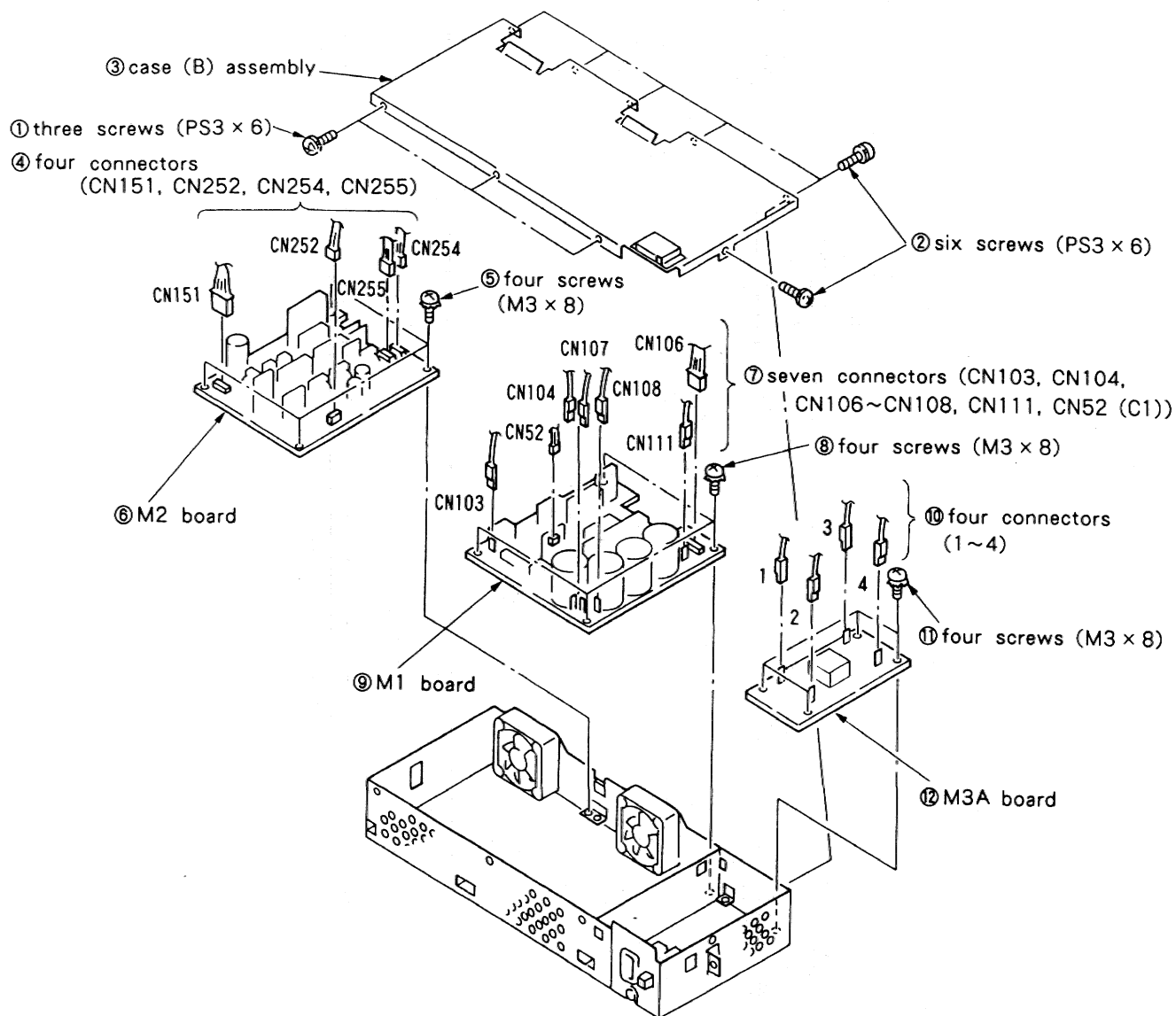


**DM board**

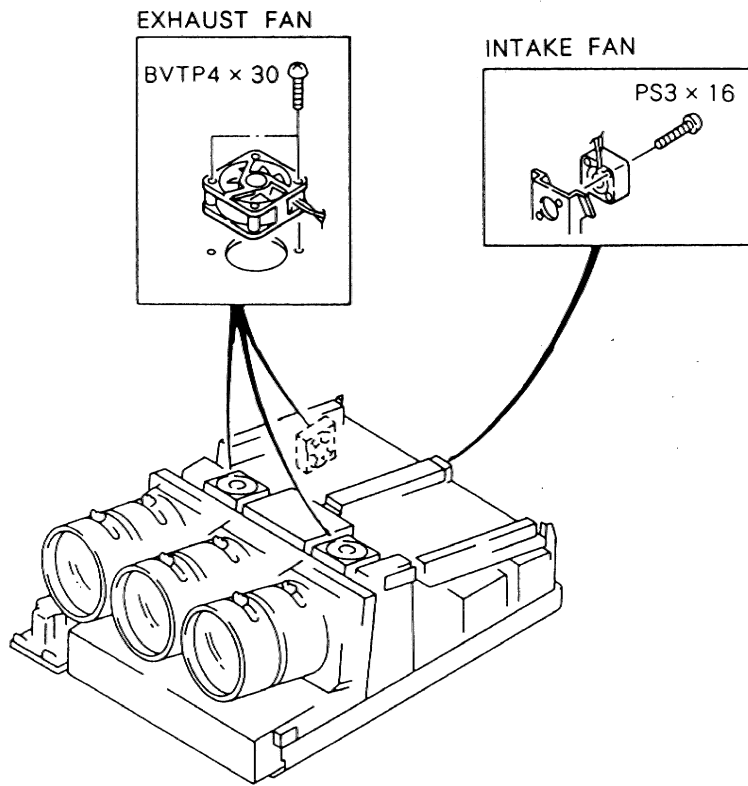


㉕ nineteen connectors  
(DM6~11, DM18~25, DM27~29, DM31, 35)

## 2-8. M1, M2 AND M3A BOARDS REMOVAL



## 2-9. ATTACHMENT DIRECTION OF THE DC FAN



# MEMO