

Service Manual

Color Video/Data Projector

PT-105

chassis No. Q10

Supplement-4

▲ WARNING

The service literature is designed for experienced repair technicians only and is not designed for use by the general public. It does not contain warnings or cautions to advise non-technical individuals of potential dangers in attempting to service a product. Products powered by electricity should be serviced or repaired only by experienced professional technicians. Any attempt to service or repair the product or products dealt with in this service literature by anyone else could result in serious injury or death.

Subject: Correction of Schematic Diagram and Parts List

Please file and use this supplement manual along with the service manuals for the below table.

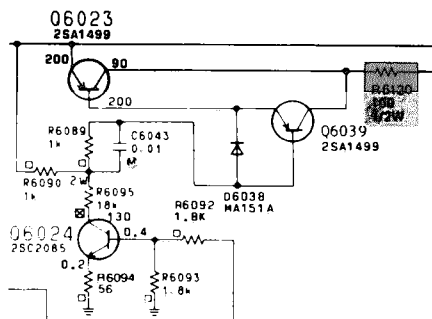
Service Manual for Reference			
Model No.	Order No.	Model No.	Order No.
PT-105 (Original)	VED88030080C1	PT-105 (Supplement-2)	VED88090090S1
PT-105 (Supplement-1)	VED88070089S1	PT-105 (Supplement-3)	VED89080027S1

Reason: Addition of shades on special safety components and symbol mark ▲ in parts list.

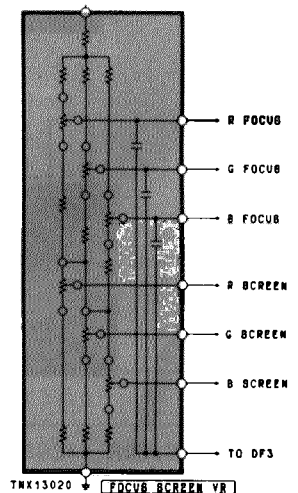
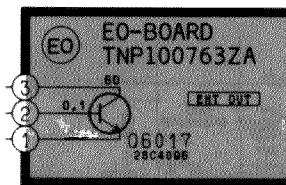
■ Schematic Diagram

For supplement-1

- On page 18.
(E-Board)



- On page 19.
(EO-Board)



vdc@videodisplay.com

Panasonic

Panasonic Communications & Systems Company
Division of Matsushita Electric Corporation of America
50 Meadowland Parkway, Secaucus, New Jersey 07094

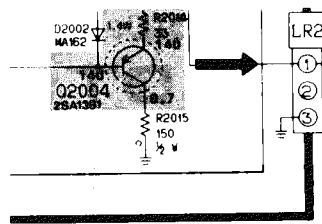
Matsushita Electric of Canada Limited
5770 Ambler Drive, Mississauga, Ontario, L4W 2T3

Panasonic Sales Company, Division of Matsushita Electric of Puerto Rico, Inc.
San Gabriel Industrial Park
65th Infantry Ave. Km 9.5
Carolina, P.R. 00630

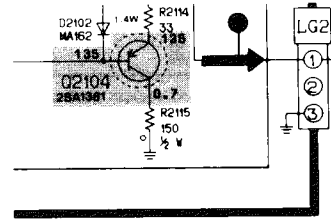
© Matsushita Electric Industrial Co. Ltd.
All rights reserved. Unauthorized copying and distribution is a violation of law

• On page 22.

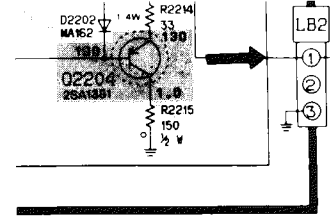
(LR1-Board)



(LG1-Board)

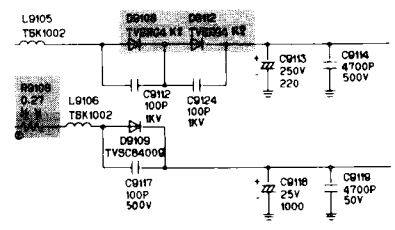
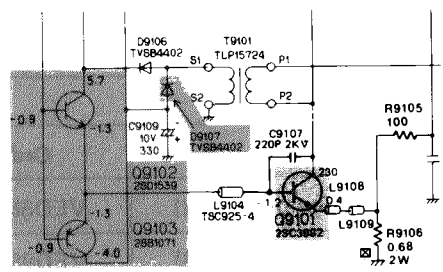


(LB1-Board)

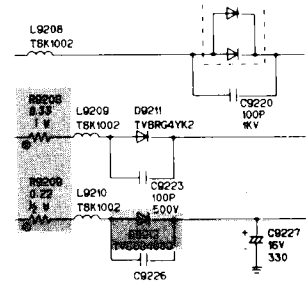
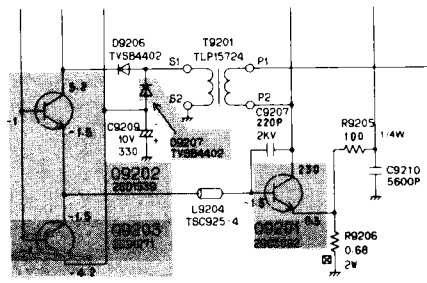


• On page 29 and 30.

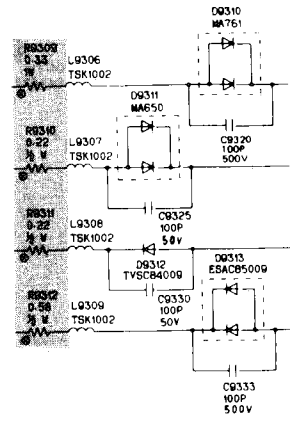
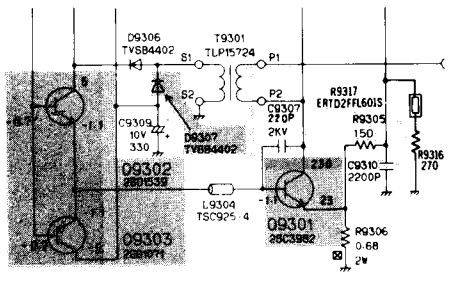
(P1-Board)



(P2-Board)

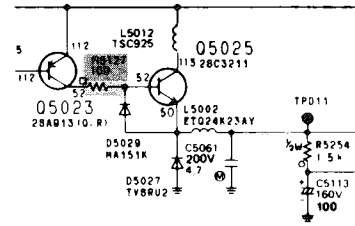
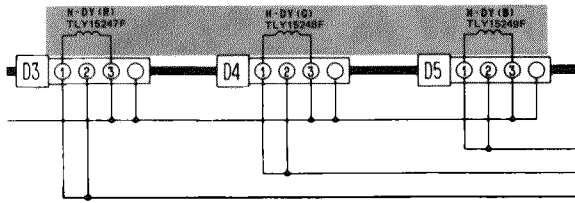


(P3-Board)



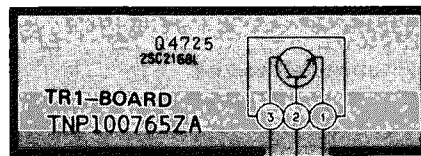
- On page 32.

(D-Board)



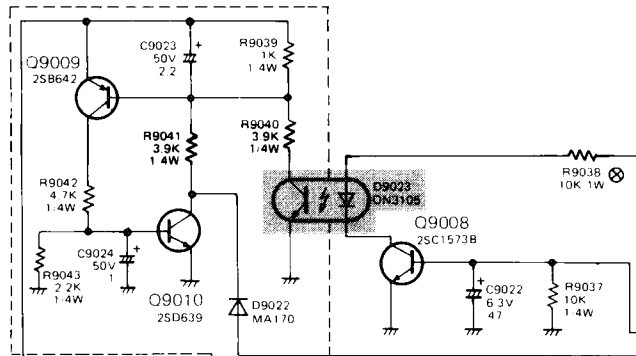
- On page 34 and 35.

(TR1-Board)



For supplement-3

- On page 5.



■ Parts List

- For the below parts, as symbol mark Δ is omitted, add symbol mark Δ to replacement parts list.

Ref. No. for corresponding parts

Parts Name	Ref. No.
RESISTOR	R5127, R6120, R9011, R9108, R9208, R9209, R9309, R9310, R9311, R9312
DIODE	D9023, D9107, D9108, D9112, D9207, D9212, D9307
TRANSISTOR	Q2004, Q2104, Q2204, Q4725, Q6017, Q9001, Q9004, Q9101, Q9102, Q9103, Q9201, Q9202, Q9203, Q9301, Q9302, Q9303
DEFLECTION YOKE	K37, K38, K39
FOCUS BLOCK	K45