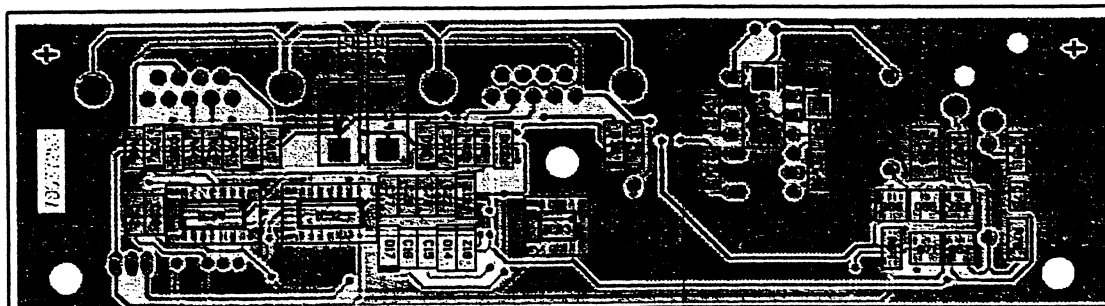


Modifications reserved

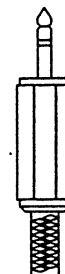
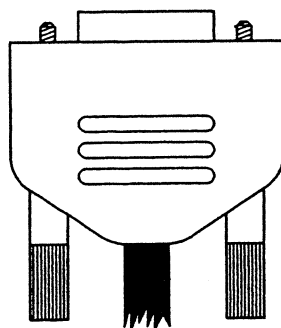
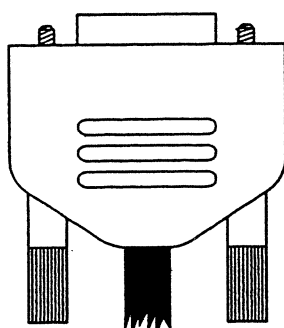
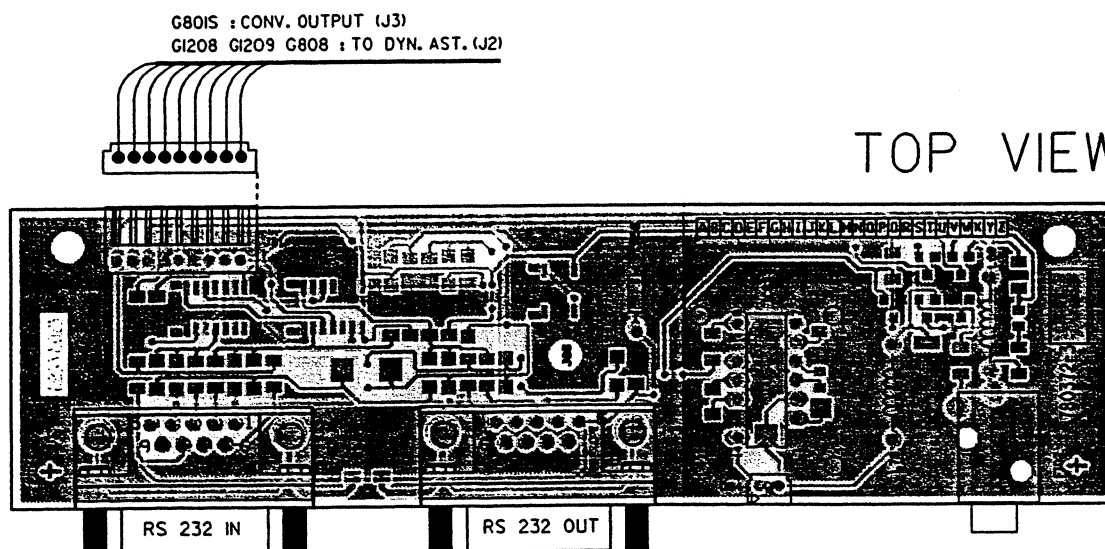
Name	IR & RS232 COMM.		Article nr.
			76 2510-2
Date	20-12-1994	Drawn	JVDY
		Checked	SCG

BARCO PROJECTION SYSTEMS

BOTTOM VIEW



TOP VIEW



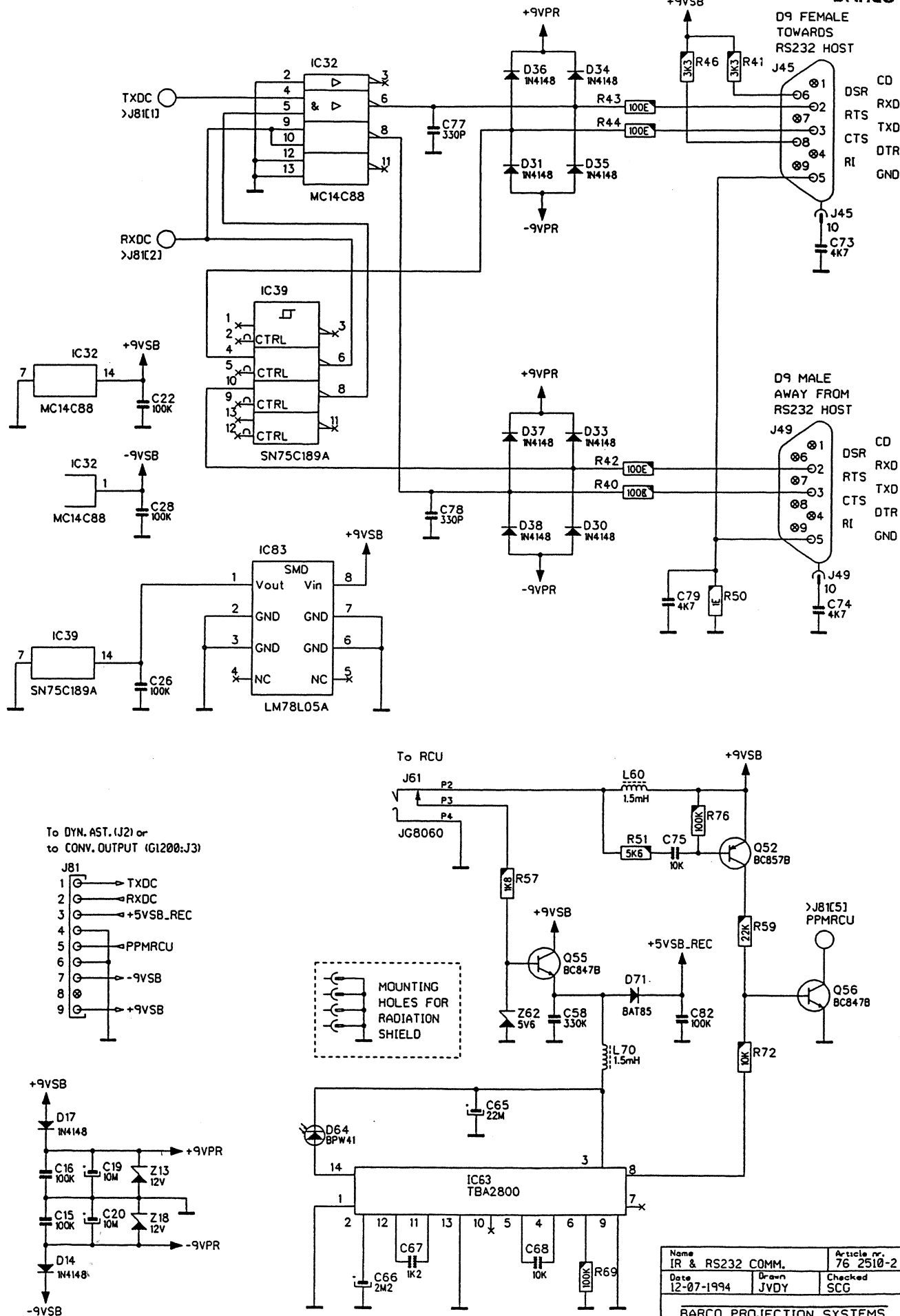
To remote input

Name	IR & RS232 COMM.	Article nr.	76 2510-3
19-12-1994	Drawn	JVDY	Checked
			SCG
BARCO PROJECTION SYSTEMS			

Modifications reserved

780372-2

BARCO



COMP. LO

C15 A 6
C16 A 6
C17 A 6
C18 A 6
C19 A 6
C20 A 6
C21 A 6
C22 A 6
C23 A 6
C24 A 6
C25 A 6
C26 A 6
C27 A 6
C28 A 6
C29 A 6
C30 A 6
C31 A 6
C32 A 6
C33 A 6
C34 A 6
C35 A 6
C36 A 6
C37 A 6
C38 A 6
C39 A 6
C40 A 6
C41 A 6
C42 A 6
C43 A 6
C44 A 6
C45 A 6
C46 A 6
C47 A 6
C48 A 6
C49 A 6
C50 A 6
C51 A 6
C52 A 6
C53 A 6
C54 A 6
C55 A 6
C56 A 6
C57 A 6
C58 A 6
C59 A 6
C60 A 6
C61 A 6
C62 A 6
C63 A 6
C64 A 6
C65 A 6
C66 A 6
C67 A 6
C68 A 6
C69 A 6
C70 A 6
C71 A 6
C72 A 6
C73 A 6
C74 A 6
C75 A 6
C76 A 6
C77 A 6
C78 A 6
C79 A 6
C80 A 6
C81 A 6
C82 A 6
C83 A 6
C84 A 6
C85 A 6
C86 A 6
C87 A 6
C88 A 6
C89 A 6
C90 A 6
C91 A 6
C92 A 6
C93 A 6
C94 A 6
C95 A 6
C96 A 6
C97 A 6
C98 A 6
C99 A 6
C100 A 6

D14 A 6
D17 A 6
D30 A 6
D31 A 6
D33 A 6
D34 A 6
D35 A 6
D36 A 6
D37 A 6
D38 A 6
D39 A 6
D40 A 6
D41 A 6
D42 A 6
D43 A 6
D44 A 6
D45 A 6
D46 A 6
D47 A 6
D48 A 6
D49 A 6
D50 A 6
D51 A 6
D52 A 6
D53 A 6
D54 A 6
D55 A 6
D56 A 6
D57 A 6
D58 A 6
D59 A 6
D60 A 6
D61 A 6
D62 A 6
D63 A 6
D64 A 6
D65 A 6
D66 A 6
D67 A 6
D68 A 6
D69 A 6
D70 A 6
D71 A 6
D72 A 6
D73 A 6
D74 A 6
D75 A 6
D76 A 6
D77 A 6
D78 A 6
D79 A 6
D80 A 6
D81 A 6
D82 A 6
D83 A 6
D84 A 6
D85 A 6
D86 A 6
D87 A 6
D88 A 6
D89 A 6
D90 A 6
D91 A 6
D92 A 6
D93 A 6
D94 A 6
D95 A 6
D96 A 6
D97 A 6
D98 A 6
D99 A 6
D100 A 6

IC32 A 2
IC33 A 2
IC34 A 2
IC35 A 2
IC36 A 2
IC37 A 2
IC38 A 2
IC39 A 2
IC40 A 2
IC41 A 2
IC42 A 2
IC43 A 2
IC44 A 2
IC45 A 2
IC46 A 2
IC47 A 2
IC48 A 2
IC49 A 2
IC50 A 2
IC51 A 2
IC52 A 2
IC53 A 2
IC54 A 2
IC55 A 2
IC56 A 2
IC57 A 2
IC58 A 2
IC59 A 2
IC60 A 2
IC61 A 2
IC62 A 2
IC63 A 2
IC64 A 2
IC65 A 2
IC66 A 2
IC67 A 2
IC68 A 2
IC69 A 2
IC70 A 2
IC71 A 2
IC72 A 2
IC73 A 2
IC74 A 2
IC75 A 2
IC76 A 2
IC77 A 2
IC78 A 2
IC79 A 2
IC80 A 2
IC81 A 2
IC82 A 2
IC83 A 2
IC84 A 2
IC85 A 2
IC86 A 2
IC87 A 2
IC88 A 2
IC89 A 2
IC90 A 2
IC91 A 2
IC92 A 2
IC93 A 2
IC94 A 2
IC95 A 2
IC96 A 2
IC97 A 2
IC98 A 2
IC99 A 2
IC100 A 2

J45 D 2
J46 D 2
J47 D 2
J48 D 2
J49 D 2
J50 D 2
J51 D 2
J52 D 2
J53 D 2
J54 D 2
J55 D 2
J56 D 2
J57 D 2
J58 D 2
J59 D 2
J60 D 2
J61 D 2
J62 D 2
J63 D 2
J64 D 2
J65 D 2
J66 D 2
J67 D 2
J68 D 2
J69 D 2
J70 D 2
J71 D 2
J72 D 2
J73 D 2
J74 D 2
J75 D 2
J76 D 2
J77 D 2
J78 D 2
J79 D 2
J80 D 2
J81 D 2
J82 D 2
J83 D 2
J84 D 2
J85 D 2
J86 D 2
J87 D 2
J88 D 2
J89 D 2
J90 D 2
J91 D 2
J92 D 2
J93 D 2
J94 D 2
J95 D 2
J96 D 2
J97 D 2
J98 D 2
J99 D 2
J100 D 2

L60 C 4
L70 C 4
L80 C 4
L90 C 4
L100 C 4

Q52 D 4
Q53 D 4
Q54 D 4
Q55 D 4
Q56 D 4
Q57 D 4
Q58 D 4
Q59 D 4
Q60 D 4
Q61 D 4
Q62 D 4
Q63 D 4
Q64 D 4
Q65 D 4
Q66 D 4
Q67 D 4
Q68 D 4
Q69 D 4
Q70 D 4
Q71 D 4
Q72 D 4
Q73 D 4
Q74 D 4
Q75 D 4
Q76 D 4
Q77 D 4
Q78 D 4
Q79 D 4
Q80 D 4
Q81 D 4
Q82 D 4
Q83 D 4
Q84 D 4
Q85 D 4
Q86 D 4
Q87 D 4
Q88 D 4
Q89 D 4
Q90 D 4
Q91 D 4
Q92 D 4
Q93 D 4
Q94 D 4
Q95 D 4
Q96 D 4
Q97 D 4
Q98 D 4
Q99 D 4
Q100 D 4

R40 C 3
R41 C 3
R42 C 3
R43 C 3
R44 C 3
R45 C 3
R46 C 3
R47 C 3
R48 C 3
R49 C 3
R50 C 3
R51 C 3
R52 C 3
R53 C 3
R54 C 3
R55 C 3
R56 C 3
R57 C 3
R58 C 3
R59 C 3
R60 C 3
R61 C 3
R62 C 3
R63 C 3
R64 C 3
R65 C 3
R66 C 3
R67 C 3
R68 C 3
R69 C 3
R70 C 3
R71 C 3
R72 C 3
R73 C 3
R74 C 3
R75 C 3
R76 C 3
R77 C 3
R78 C 3
R79 C 3
R80 C 3
R81 C 3
R82 C 3
R83 C 3
R84 C 3
R85 C 3
R86 C 3
R87 C 3
R88 C 3
R89 C 3
R90 C 3
R91 C 3
R92 C 3
R93 C 3
R94 C 3
R95 C 3
R96 C 3
R97 C 3
R98 C 3
R99 C 3
R100 C 3

Z62 A 6
Z63 A 6
Z64 A 6
Z65 A 6
Z66 A 6
Z67 A 6
Z68 A 6
Z69 A 6
Z70 A 6
Z71 A 6
Z72 A 6
Z73 A 6
Z74 A 6
Z75 A 6
Z76 A 6
Z77 A 6
Z78 A 6
Z79 A 6
Z80 A 6
Z81 A 6
Z82 A 6
Z83 A 6
Z84 A 6
Z85 A 6
Z86 A 6
Z87 A 6
Z88 A 6
Z89 A 6
Z90 A 6
Z91 A 6
Z92 A 6
Z93 A 6
Z94 A 6
Z95 A 6
Z96 A 6
Z97 A 6
Z98 A 6
Z99 A 6
Z100 A 6

Name	IR & RS232 COMM.	Article no.	76 2510-2
Date	12-07-1994	Drawn	JVDY
Checked	SCG		
BARCO PROJECTION SYSTEMS			

IR+RS 232 Communication module

R762510

Partslisting IR+RS 232 communication module

SIT.	ITEM NO.	DESCRIPTION	QUANTITY	SIT.	ITEM NO.	DESCRIPTION	QUANTITY
10	R805674	FRM PJ53 RX SCR N	1	J 61	B338800	J PHN FBS D 3.5MON P	1
				J 81	R313949	J CT H MBS P 9 M2SN	1
C 15	P210122	C# X7R MU 100N K 50 1206	1	L 60	R3061582	CH AX NS 1.5 MH	1
C 16	P210122	C# X7R MU 100N K 50 1206	1	L 70	R3061582	CH AX NS 1.5 MH	1
C 19	P212024	C# TA 10M M 35 7343	1				
C 20	P212024	C# TA 10M M 35 7343	1	PC	R780372	PCD#PJ49 *800 RS232+RX	1
C 22	P210122	C# X7R MU 100N K 50 1206	1	Q 52	P232050	Q#BC857B P SS SOT23	1
C 26	P210122	C# X7R MU 100N K 50 1206	1	Q 55	P232051	Q#BC847B N SS SOT23	1
C 28	P210122	C# X7R MU 100N K 50 1206	1	Q 56	P232051	Q#BC847B N SS SOT23	1
C 58	P210095	C# X7R MU 330N M 50 1812	1				
C 65	P212031	C# TA 22M M 16 7343	1	R 40	P200049	R# CE H100E J 0W12 1206	1
C 66	P212001	C# TA 2M2M 20 3528	1	R 41	P200085	R# CE H 3K3 J 0W12 1206	1
C 67	P210112	C# COG MU 1N2J 50 1206	1	R 42	P200049	R# CE H100E J 0W12 1206	1
C 68	P210041	C# X7R MU 10N K 50 0805	1	R 43	P200049	R# CE H100E J 0W12 1206	1
C 73	P210140	C# X7R MU 4N7K 50 1206	1	R 44	P200049	R# CE H100E J 0W12 1206	1
C 74	P210140	C# X7R MU 4N7K 50 1206	1	R 46	P200085	R# CE H 3K3 J 0W12 1206	1
C 75	P210041	C# X7R MU 10N K 50 0805	1	R 50	R1011008	R CFFH 1E J 0W25	1
C 77	P210121	C# COG MU 330P J 50 1206	1	R 51	P200091	R# CE H 5K6 J 0W12 1206	1
C 78	P210121	C# COG MU 330P J 50 1206	1	R 57	P200079	R# CE H 1K8 J 0W12 1206	1
C 79	P210140	C# X7R MU 4N7K 50 1206	1	R 59	P200105	R# CE H 22K J 0W12 1206	1
C 82	P210122	C# X7R MU 100N K 50 1206	1	R 69	P200121	R# CE H100K J 0W12 1206	1
				R 72	P200097	R# CE H 10K J 0W12 1206	1
D 14	P234099	D#4148 R DMMELF	1	R 76	P200121	R# CE H100K J 0W12 1206	1
D 17	P234099	D#4148 R DMMELF	1				
D 30	P234099	D#4148 R DMMELF	1	Z 13	P234046	D#ZEN 12V 0W5 C DMMELF	1
D 31	P234099	D#4148 R DMMELF	1	Z 18	P234046	D#ZEN 12V 0W5 C DMMELF	1
D 33	P234099	D#4148 R DMMELF	1	Z 62	P234014	D#ZEN 5V6 0W3 C SOT23	1
D 34	P234099	D#4148 R DMMELF	1				
D 35	P234099	D#4148 R DMMELF	1				
D 36	P234099	D#4148 R DMMELF	1				
D 37	P234099	D#4148 R DMMELF	1				
D 38	P234099	D#4148 R DMMELF	1				
D 64	R131681	D O BPW41 032	1				
D 71	P234055	D#BAT54 SCH SOT23	1				
I 32	P230561	U#14C88 MC SO14 P	1				
I 39	P230652	U#75C189A SN SO14 P	1				
I 63	R132824	U 2800 TBA DIP14 P	1				
I 83	P230062	U#78L05A LM SO8 P	1				
J 45	R3135015	J DE P8 FBS P 9 FUMBLPGDB	1				
J 49	R3135005	J DE P8 MBS P 9 FUMBLPGDB	1				